

# SSP Quarter 1 Report

July 1, 2020 - September 30, 2020

State of Utah Fiscal Year begins July 1

Data Export: October 21, 2020



**Table 1. Syringe Service Metrics by month for Quarter 1**

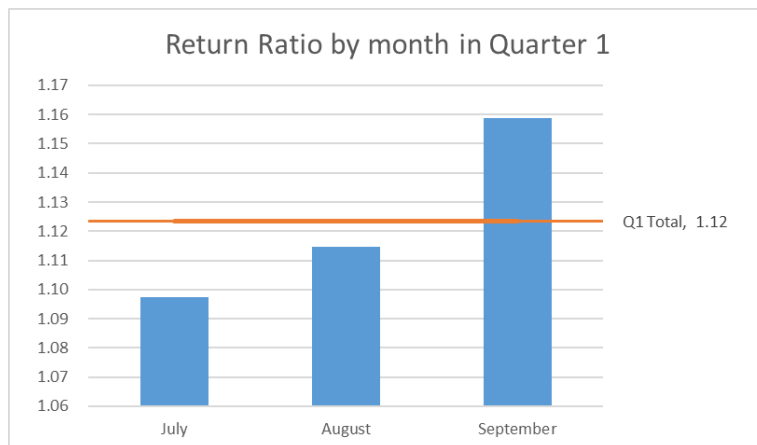
Metric	July	August	September	Q1 Totals
	N	N	N	N
Syringes In	66,866	66,876	65,776	199,518
Syringes Disposed Elsewhere*	176	600	400	1,176
Syringes Out	73,385	74,548	76,217	224,150
Return Ratio**	1.10	1.11	1.16	1.12
Return Ratio (with disposed)	1.09	1.10	1.15	1.12
Total Unique Clients Served	663	716	714	1,507
Total Encounters	1,138	1,256	1,197	3,591
New Participants	180	167	153	500

\*Self-reported proper disposal

\*\*"Return Ratio" is Syringes Out divided by Syringes In.

Syringe Service Providers (SSPs) operating in Utah are required by law to report this information. Currently, six SSPs operate in the state of Utah: The Utah Harm Reduction Coalition, One Voice Recovery, Utah AIDS Foundation (UAF), Utah Naloxone, Soap 2 Hope, and Southeast Utah Health Department. Due to COVID-19, UAF did not operate as an SSP in Quarter 1. Utah Naloxone provides the UDOH with program-level data about SSP metrics, but does not report data for naloxone or reversals, referrals, or HCV/HIV testing.

**Figure 1. Return Ratio of Syringes Given out to Syringes Received by month for Quarter 1**



**Table 2. Naloxone Distribution and Reported Reversals by month for Quarter 1**

Naloxone	July	August	September	Q1 Totals
Doses Distributed	353	176	122	651
Reversals Reported	8	7	7	22

Reversals are defined as survival of an individual who experienced an opioid overdose when one or more naloxone doses were administered.

At each SSP encounter, participants are asked if they were the recipient of an overdose reversal with naloxone, or if they performed a reversal for someone else in the time since their last visit. It is possible that a participant could report more than one reversal per month, or encounter. Participants are given the option to decline to answer this question.

**Table 3. Referrals by month for Quarter 1**

Referrals July	Written	Verbal	Active
Substance Use Treatment	1103	605	12
HIV/HCV Testing	1098	1125	9
Naloxone	1102	1124	142
Referrals August	Written	Verbal	Active
Substance Use Treatment	1075	690	7
HIV/HCV Testing	1074	1223	9
Naloxone	1072	1219	96
Referrals September	Written	Verbal	Active
Substance Use Treatment	900	650	2
HIV/HCV Testing	902	1180	15
Naloxone	904	1178	130
Referrals Q1 Total	Written	Verbal	Active
Substance Use Treatment	3078	1945	21
HIV/HCV Testing	3074	3528	33
Naloxone	3078	3521	368

Substance Use Treatment, HIV/HCV Testing, and Naloxone referrals are required referrals at each encounter for all providers. The figures show number of written, verbal, and active (“warm hand off”) referrals for each service in current report month and total referrals for Quarter 1.

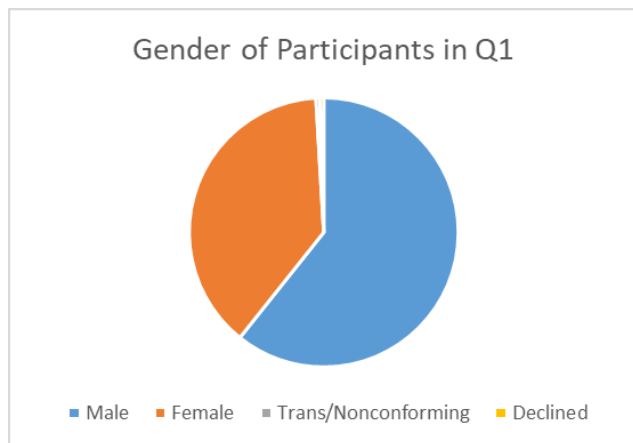
**Table 4. Gender of Participants in Quarter 1**

Gender	Q1 (%)	Q1 (N)
Male	60.7%	915
Female	38.4%	578
Trans/Nonconforming	0.5%	7
Declined	0.5%	7

**Table 5. Race of Participants in Quarter 1**

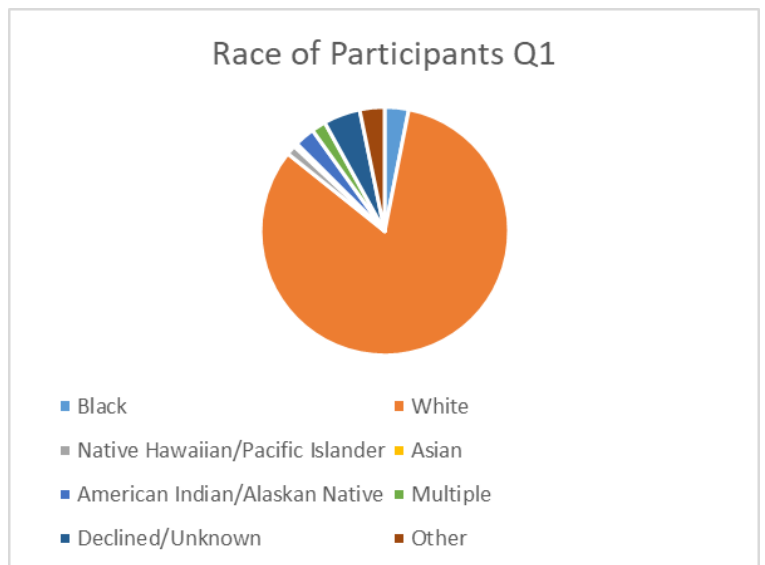
Race	Q1 (%)	Q1 (N)
Black	3.1%	47
White	82.6%	1,245
Native Hawaiian/Pacific Islander	1.3%	19
Asian	0.5%	7
American Indian/Alaskan Native	2.7%	40
Multiple	1.9%	28
Declined/Unknown	4.8%	72
Other	3.3%	49

**Figure 2. Gender of Participants in Quarter 1**



Gender and race are self-reported at intake for each participant.

**Figure 3. Race of Participants in Quarter 1**

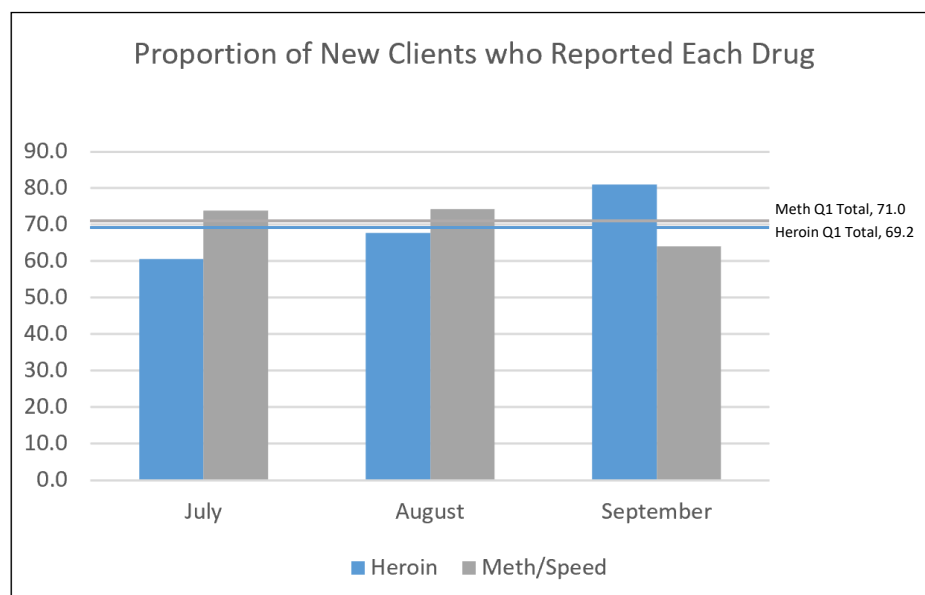


**Table 6. Substances Used in the Past 30 days Reported at Intake by month for Quarter 1**

Substance	July	August	September	Q1 Totals
	N	N	N	N
<b>New Clients</b>	<b>180</b>	<b>167</b>	<b>153</b>	<b>500</b>
Meth/Speed	133	124	98	355
Heroin	109	113	124	346
Cannabis/Marijuana	34	23	22	79
Crack/Cocaine	16	19	18	53
Alcohol	18	12	11	41
Tobacco	17	7	3	27
Benzodiazepines	5	6	7	18
Suboxone	5	6	2	13
Methadone	3	2	4	9
Spice	1	4	4	9
Prescription Pain Medicine	2	4	1	7
Subutex	1	4	0	5
Gabapentin	0	2	0	2

New clients are asked a series of intake questions at their first visit. The new participants are asked to report the substances used in the past 30 days. If an individual has used more than one substance, they will mark each substance used.

**Figure 4. Proportion of New Participants who Reported Using Heroin and Meth by month for Quarter 1**



**Table 7. HCV an HIV Testing by month for Quarter 1**

HCV Testing*	July	August	September	Q1 Totals
Reported <b>HCV</b> positive at intake	6	14	22	42
Tested	10	19	22	51
Tested Positive	6	3	1	10
Positivity Rate	60.0%	15.8%	4.5%	19.6%
HIV Testing*	July	August	September	Q1 Totals
Reported <b>HIV</b> positive at intake	0	0	5	5
Tested	10	12	26	48
Tested Positive	1	1	0	2
Positivity Rate	10.0%	8.3%	0.0%	4.2%

Two SSPs provided rapid testing during Quarter 1, shown in this table. All participants, both new and returning, were offered testing at encounters. Individuals who visit SSPs that do not provide testing are referred to other testing sites in the community.

**Figure 6. ZIP Code of each Syringe Service Encounter Reported in Quarter 1**

SSPs record the ZIP code location of each SSP encounter they have with each participant. The map below displays the ZIP code location of SSP encounters for Quarter 1. The ZIP code locations with higher numbers of encounters are marked by darker shades of blue.

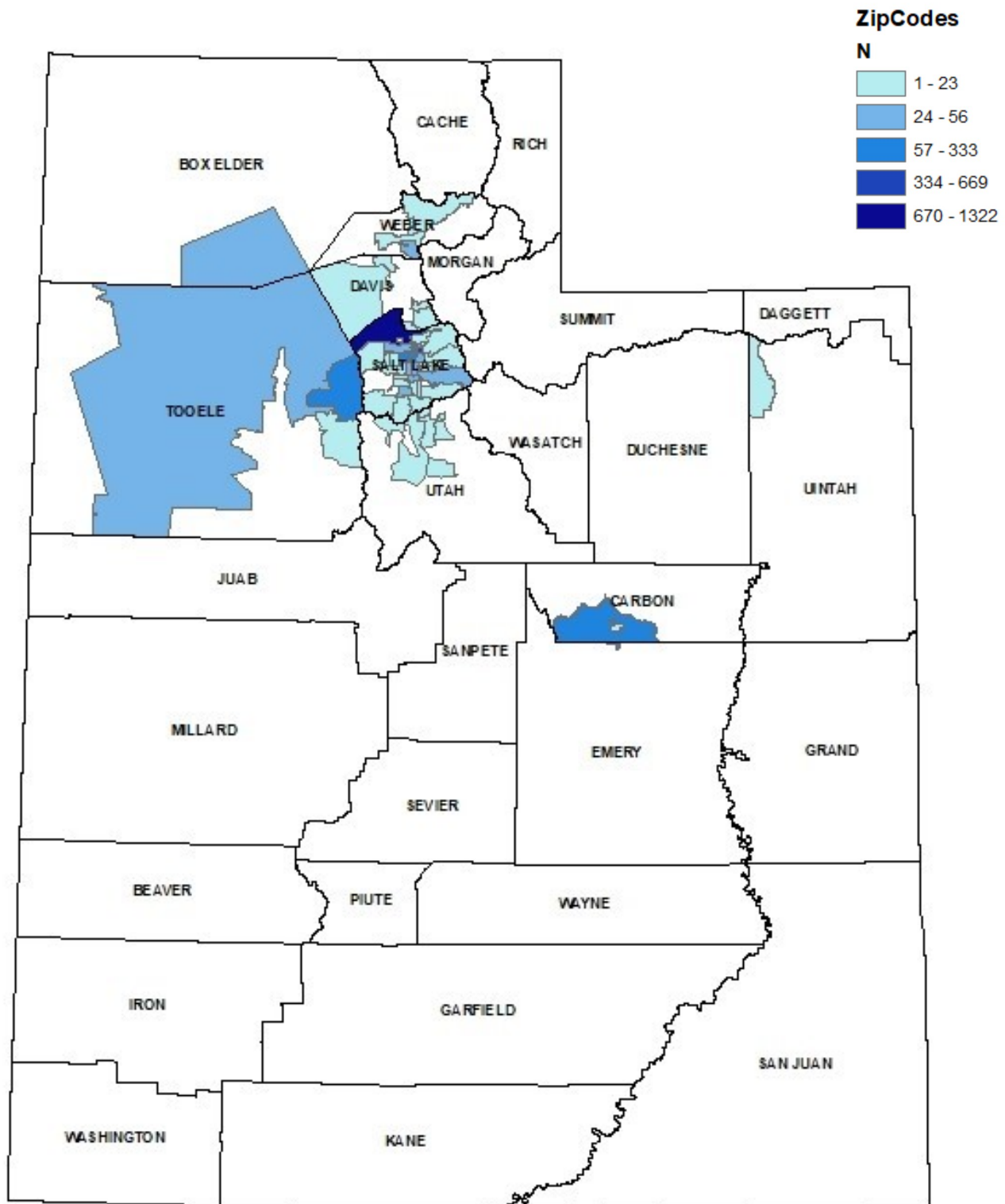
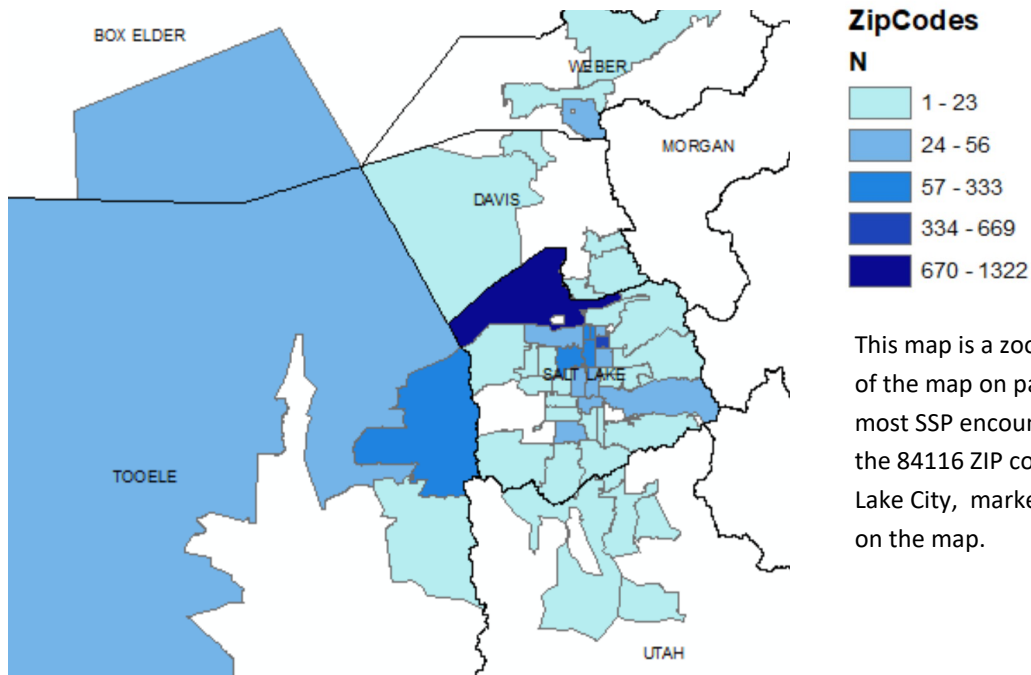


Figure 6. Encounters in Quarter 1 by ZIP Code



This map is a zoomed in view of the map on page 4. The most SSP encounters occur in the 84116 ZIP code in Salt Lake City, marked dark blue on the map.

Table 8. Zip Code of Encounters in Quarter 1

Zip Code	Number of	Zip Code	Number of
84116	1322	84601	7
84105	669	84088	7
84115	333	84118	6
84111	193	84401	5
84101	116	84128	5
84074	112	84120	5
84119	108	84094	4
84501	105	84003	4
84403	56	84096	3
84121	54	84092	3
84104	53	84065	3
84107	52	84062	3
84047	43	84044	3
84123	41	84043	3
84029	31	84310	2
84106	30	84109	2
84102	29	84108	2
84095	26	84090	2
84542	23	84020	2
84070	21	84010	2
84103	18	84415	1
84124	17	84085	1
84129	16	84075	1
84054	16	84071	1
84117	14	84015	1
84084	13	84014	1